

HIGHLIGHTS

LCHC's Employee Newsletter

LCHC Welcomes Eric Muhm, Podiatrist, To Our Team



Lucas County Health Center (LCHC) is pleased to welcome Eric Muhm, DPM to the facility.

"We are excited to have Dr. Muhm join our medical team and are positive his knowledge and expertise will hit the same quality markers that says LCHC is one of the best hospitals in the nation," said Brian Sims, CEO.

Dr. Muhm completed his undergraduate schooling at the University of Iowa in Iowa City and attended medical school at Temple University in Philadelphia, Pennsylvania. He completed a Podiatric Medicine and Surgery Residency and Reconstructive Rearfoot/Ankle Surgery Residency at Detroit Medical Center, where he served as Chief Resident. Dr. Muhm is board certified in foot surgery with the American Board of Foot and Ankle Surgery and has more than six years of diverse experiences, especially in Podiatry.

Dr. Muhm grew up in LeMars, Iowa and is excited to call Iowa his home again. In his free time he enjoys golfing, fishing, boating, exercising, watching sports, and traveling. He is accepting new patients now and is looking forward to being part of a team of providers where a positive patient experience comes first.

Welcome, New Employees!

Nicholas Alger

EMT - Emergency Services

Bradley Guthrie

Maintenance Tech - Maintenance

Erin Phillips

Receptionist - Medical Clinic

Julie Arnold

RN - LCHC Medical Clinic

Courtney Halterman

Coder - Health Information

Jennifer Skinner

LPN - Medical Clinic

Shari Downs

Respiratory Therapist - RT

Dr. Eric Muhm

Podiatrist - Medical Clinic

Terra Walker

EMT - Emergency Services

Melody Gibson Named Employee of the Quarter



For going “above & beyond” in the best interest of Lucas County Health Center, Melody Gibson became the most recent recipient of the Employee of the Quarter Award. Gibson was recognized for her willingness to help whenever needed, being trustworthy and responsible, showing dignity at work, home, and in life, and always having a smile on her face. Congratulations for a job well done, Melody!

LCHC Receives Checks from Lady Chargers, Van Allen Students, and Hy-Vee Employee for Comfort Fund



The month of November was a busy one for Lucas County Health Center! We were fortunate to have three different organizations present us with checks to help cancer patients in our facility.

On November 12, Van Allen Principal Josh Morgan held a special assembly to present LCHC with a check for \$260.25 for our Comfort Fund. This fund was established by Van Allen Elementary school students in 2018.

Hy-Vee Distribution employees also held a contest during the month of October and raised \$1500 in honor of breast cancer awareness.

Finally, the Charger Softball team. Every summer the Lady Chargers shed their typical red and white uniforms to don pink jerseys for the “Go Pink” game. The proceeds from the game and donated to LCHC and are used to provide assistance to patients receiving cancer treatments. In year’s past, the funds were designated to cover mammogram costs for women who could not afford the screening. In recent years, however, the policies have changed and this screening is now covered by all insurances. The funds donated from the Go Pink game totaled \$1,884.12.

All funds are part of the Comfort Fund and are used to provide comfort items and other assistance to cancer patients receiving chemotherapy, infusion treatments, and more.

1	2	3	4	5	6	7
Healthstream DUE!		\$5 Jewelry Sale Atrium 10 AM - 5 PM				
8	9	10	11	12	13	14
		Diabetes Support Group Education Room 6:30 PM		Holiday Open House heart + soul 9 AM - 3 PM		
15	16	17	18	19	20	21
				Progressive Potluck various rooms 11:30 AM - 2 PM		
22	23	24	25	26	27	28
29	30	31	DECEMBER			

Anniversaries	Birthdays	Huddles
20 Years: Lisa Richmond - December 2 7 Years: Mim Kurimski - December 31 6 Years: Mary Coddington - December 2 5 Years: Nora Conner - December 16 Paige Nelson - December 22 4 Years: Branigan Head - December 4 Sonya Bellon - December 8 3 Years: Ashleigh Carroll - December 5 1 Year: Lacey Roe - December 3	December 3 - Melody Gibson December 5 - Ann Moon December 7 - Karey Brandon December 8 - Kerri Guthrie December 10 - Kurt Reineck December 10 - Terra Walker December 14 - Heidi Braby December 16 - Diane Carruthers December 16 - Christina Umbenhower December 17 - Olga Vorobets December 18 - Bradley Guthrie December 19 - Michelle Oelmann December 24 - Sara VanHulzen December 27 - Jacob Cockerham December 29 - Laura Miller	Medical Clinic Daily at 7:45 AM Finance Tues., Fri. at 11:15 AM Med/Surg Daily at 3 PM Rad/ED/Amb/Lab Mon., Tues., Thurs. at 11:15 AM

LCHC Receives \$95,000 Loan from Clarke Electric Cooperative's Revolving Loan Fund



At the October Board of Trustees meeting, Lucas County Health Center's Chief Executive Officer, Brian Sims, received a \$95,878 check from Jason Gibbs, Manager of Member Services at Clarke Electric Cooperative. The money comes from CEC's Community & Economic Development Revolving Loan Fund, which was created from a USDA Rural Economic Development Agency Grant.

LCHC's Board of Trustees approved the resolution which provided the opportunity to access funds from CEC's revolving loan fund at zero percent interest to purchase a chemical

analyzer and a retrofit ambulance engine.

"As National Rural Health Day approaches, I am reminded how important it is for our rural healthcare facilities to remain viable for all communities it serves, said Brian Sims, CEO at LCHC. "Clarke Electric, through the use of the USDA Revolving Loan Fund, is a true partner when it comes to health, safety, and economic vitality for our part of rural Iowa."

This fund improves the quality of life in rural areas by contributing to long-term improvements in local economies and helps businesses that meet the program criteria. To date, Clarke Electric has loaned out more than \$1.2 million to support local businesses and development in Southern Iowa. As the funds are paid back, they become available for re-lending.

"We are thrilled to partner with LCHC. They, like us, are constantly searching for ways to improve and expand the services they provide to the good people of Lucas and surrounding counties" said Jason Gibbs, Manager of Member Services, Clarke Electric Cooperative.



Wishing you a happy and healthy holiday season!

LUCAS **LC** COUNTY
HEALTH **HC** CENTER

An Affiliate of  UnityPoint Health

LCHC Recognized as a “Community Star” on National Rural Health Day

On the third Thursday of November every year, the National Organization of State Offices of Rural Health (NOSORH), the member organization for each of the 50 State Offices of Rural Health (SORH), leads National Rural Health Day (NRHD), an annual day of recognition, shining a light on those who serve the vital health needs of the estimated 57 million people living in rural America.

SORHs provide support to rural hospitals, clinics, and first responders in several ways including technical assistance, funding that supports workforce development, population health management, quality improvement initiatives, and more.

In 2015, NOSORH invited its members to nominate hospital and emergency first responder teams, community health, and volunteer service heroes on the front lines of rural health who were making a positive impact on rural lives. Soon after the stories started coming, the book of Community Stars has been published on NRHD.

Lucas County Health Center was nominated and their story was selected to appear in the 2019 edition that will be available on the <https://www.PowerofRural.org> website, the official hub for NRHD and the Power of Rural movement, beginning November 21, 2019. For the first time since its inception, a limited number of Community Star books will also be available for purchase.

Find the full story at the end of this newsletter!

Stream of Excellence

Stream of Excellence recognizes employees who create an environment in which people are connected to their work, their colleagues, and our patients.

Sarah Newton is the November winner and was recognized by Nikita Rowell who said “Thank you for guiding me in the right direction! You have taught me a lot and I appreciate you for taking the time to explain things to me as a new nurse! Your kind words of encouragement have boosted my confidence!”

Stream of Excellence recognition boards are located in the hallway near Surgery and in Bistro 61. All employees are eligible for this award.

Kudos

Thank you for attending the Lucas County Fair, for representing the Health Center, and for purchasing my lamb out of my Reserve Champion Pen of 3. This money will assist me in continuing to improve my show lamb herd. Thanks again!
Paige Burgett

LCHC Staff, Admin, and Board -
Thank you for sending the beautiful red rose. Your thoughtfulness meant so much!
The Family of Grace McDonald

I would like to thank you for buying my Market Goat at the 2019 Fair. I enjoy showing livestock and spending my summers in the barn and at livestock shows. I plan to use the money for next year's projects. Your support at the Lucas County Fair is appreciated.
Sayge Polo

LCHC Staff, Admin, and Board -
Thank you so much for the lovely red rose you sent for our mother's funeral. We also truly appreciate the care and concern given to her by your staff during her many stays there.

She loved volunteering at the hospital and had been looking forward to the jewelry sale. She actually sent someone to bring her samples of the jewelry while she was in the Emergency Room! Linda Baynes brought her the samples and she bought several items. We buried her with the watch and one of the pairs of earrings she bought that day!

She loved her community and her church and her many friends. She touched a lot of lives. Thanks again!
The Family of Martha Milnes

Lucas County Health Center

Chariton, Iowa

When an organization excels, it should be noted; however, when it soars, such as Lucas County Health Center (LCHC), it is deserving of special recognition and the title of 2019 Community Star.

Located in the rolling hills of Lucas County, the non-profit county hospital, an affiliate of UnityPoint Health, offers comprehensive health care services in South Central Iowa. Named as one of the top 20 Critical Access Hospitals in the nation for quality by The Chartis Center for Rural Health, LCHC enjoys a rich heritage of delivering excellence in health care, a tradition that's thriving today.

2019 has proven to be one of LCHC's most celebrated. In January, LCHC was recognized at the Centers for Medicaid and Medicare Services (CMS) Annual Quality Conference and was asked to participate in the ever-prestigious Transforming Clinical Practice Initiative Marketplace: Exemplary Practice Showcase. The event featured representatives from clinics across the nation, all of which are accomplishing real transformation within their practices. In March, its medical clinic was selected as one of six "Exemplary Practices" in the state of Iowa by the Compass Practice Transformation Network and was among 55 clinics honored nationwide. In May, the LCHC Medical Clinic once again received recognition for its efforts in that it was identified as a Pinnacle level practice in the Transforming Clinical Practice Initiative through Compass Practice Transformation Network.

High quality, family-centered care aside, LCHC is a significant driver of the county's vitality, generating 282 jobs and adding well over \$15 million to the local economy. The leadership team at LCHC strongly believes that investing in its facilities and equipment is essential, noting that the next nearest large hospital is an hour's drive. By ensuring LCHC has the best and latest technology possible, they are reducing the need for patients to travel long distances for essential health services.

In everything LCHC pursues, its mission of "Stewardship, Excellence, Dignity, Hospitality, Integrity, and Teamwork" shines through.

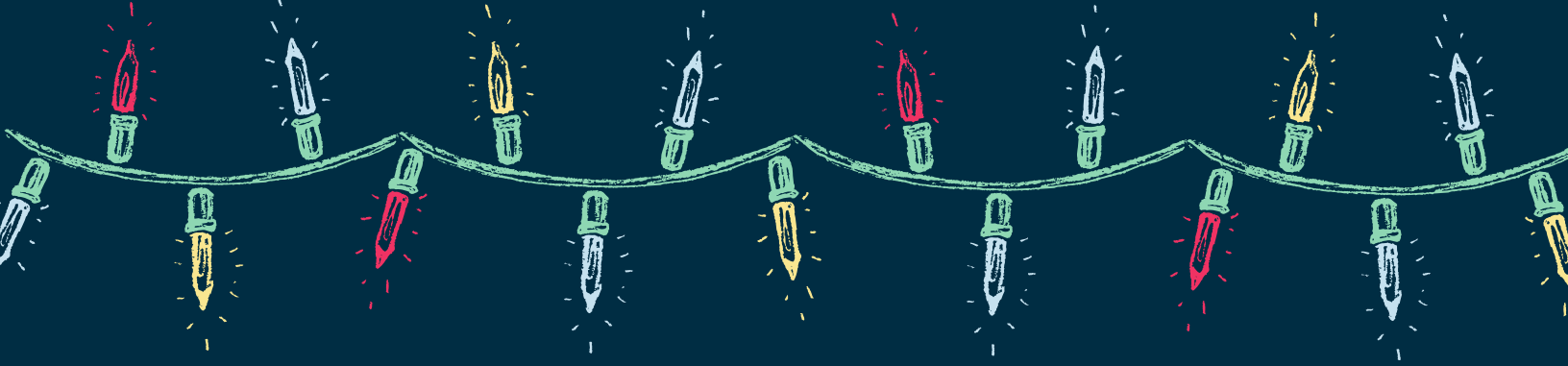


Nominated By:
Megan Hartwig & Cassie Kennedy, Iowa Department of Public Health

The Iowa State Office of Rural Health is a federal-state partnership to help rural communities and organizations identify and resolve issues and build rural health infrastructure. The office provides rural health advocacy and outreach, coordination of rural health resources and consultation to communities and health care providers in rural Iowa communities.



IOWA



Progressive Potluck

THURSDAY, DECEMBER 19

11:30 AM - 2:00 PM

MAIN DISHES & SIDE DISHES IN CONFERENCE ROOM A
ACCOUNTING, CARDIAC & PULMONARY REHAB, CLINIC,
HOUSEKEEPING, INFUSION, MATERIALS, PHYSICAL
THERAPY, SPECIALTY CLINIC, WOUND

DESSERTS IN FORMER OB WAITING ROOM
ADMINISTRATION, BUSINESS OFFICE, CLINICAL IT,
EDUCATION, HEALTH INFORMATION, HUMAN RESOURCES,
INFECTION CONTROL, MEDICAL STAFF SERVICES,
MARKETING, NUTRITION, QUALITY, VOLUNTEER SERVICES

APPETIZERS IN HALLWAY BY EDUCATION ROOM
AMBULANCE, ER, LAB, MED/SURG, PHARMACY, RADIOLOGY,
SURGERY

DRINKS
MAINTENANCE

Night Staff

NIGHT STAFF MEMBERS ARE WELCOME TO USE THE UPPER
LEVEL EMPLOYEE KITCHEN (LOCATED NEAR THE EDUCATION
ROOM) FOR THEIR POTLUCK!